

loumms creations

chrysler

size: book bag

finished

measurements:

width flat: 9 inches

height: 10.5 inches

strap: 36 inches

materials:

yarn: Drops Eskimo,
100% wool,

Colour22,

3 x 50g (depending
on length of strap)

needles: 8mm, 16
inch circular needle

notions: scrap yarn
of similar weight;
8 mm crochet hook
and cable needle;
tapestry needle;
buttons

gauge: 6 sts/2 inches
in purl

7 sts/2 inches in knit

'Chrysler' is an Art Deco style book bag, knit in the round with the straps and buckle clasp added at the end.

Its towering peaks and travelling ribs are designed to soar like the chrysler building itself!

It gives another great excuse to use chunky buttons and can be lined with strong print fabric or left as it is in its knitted glory!



© loutheperson knits 2009
Loumms Creations

loumms creations

cast on:

Loosely cast on 64 sts and join to work in the round

Cuff

Rounds 1-4: Rib (k2, p2) repeat to end

note: tie a piece of scrap yarn around the first knit stitch of row 5 to determine your bag strap pick up guide

Round 5: k all sts

Round 6: p all sts

Body of bag

Starting at row 1, working right to left, work all 42 rows of Art Deco chart. The chart is written over 32 sts so you will repeat each row of the chart twice per round.

Base of bag

Once you have completed the chart you want to make sure that you are now using the circular needle like 2 straight needles to begin grafting. So you need to have 32 of your sts on the right half of the circular needle and 32 on the left half of the circular needle. The last st worked should be the first on the right hand needle.

Now hold so the right hand needle is behind the left hand needle with the insides of the bag facing and the tips of the needles pointing right.

Grafting

Cut enough yarn to sew the bag together and tie in ends, I used 3 times the width of the bag.

Using a tapestry needle:

- 1: Insert the tapestry needle into the first stitch on the front needle purl wise and pull the yarn through
- 2: Insert the tapestry needle into the first stitch on the back needle knit wise and pull the yarn through
- 3: Insert the tapestry needle into the first stitch on the front needle knit wise letting the stitch drop off the needle then insert the tapestry needle into the next stitch on the first needle purl wise leaving that stitch on the needle, pull the yarn through

loumms creations

4: Insert the tapestry needle into the first stitch on the back needle purl wise and let the stitch drop off the needle, now insert the tapestry needle into the next stitch on the back needle knit wise leaving the stitch on the needle, pull the yarn through.

Repeat steps 3 and 4 until all of the sts have been grafted. Sew in the end.

Bag Handles

Note: You want to be picking up the stitches on the outside of the bag as the cuff will be folded over inwards and the lining sewn underneath this.

Locate your strap guide stitch. With the right side of the bag facing pick up the two sts either side of and including the marked stitch. (5 sts picked up)

Now work back and forth in stst until your strap reaches its desired length.

Pick up the 5 sts on the corresponding opposite side of the bag. Using the 4 grafting steps above, graft together the strap and the bag. Sew in the ends.

Bag Clasp

Decide which side of your bag you want to be the back.

Again with the right side (outside) of the bag facing, pick up and knit the 8 sts at the top of the centre art deco peak

Work back and forth in stst for approx 14 rows. Cast off these 8 sts leaving the final stitch as a loop.

Insert your crochet hook into this looped stitch and crochet a cord to measure approx 2 inches long. Sew the end into the opposite side of the clasp to create a button hole loop.

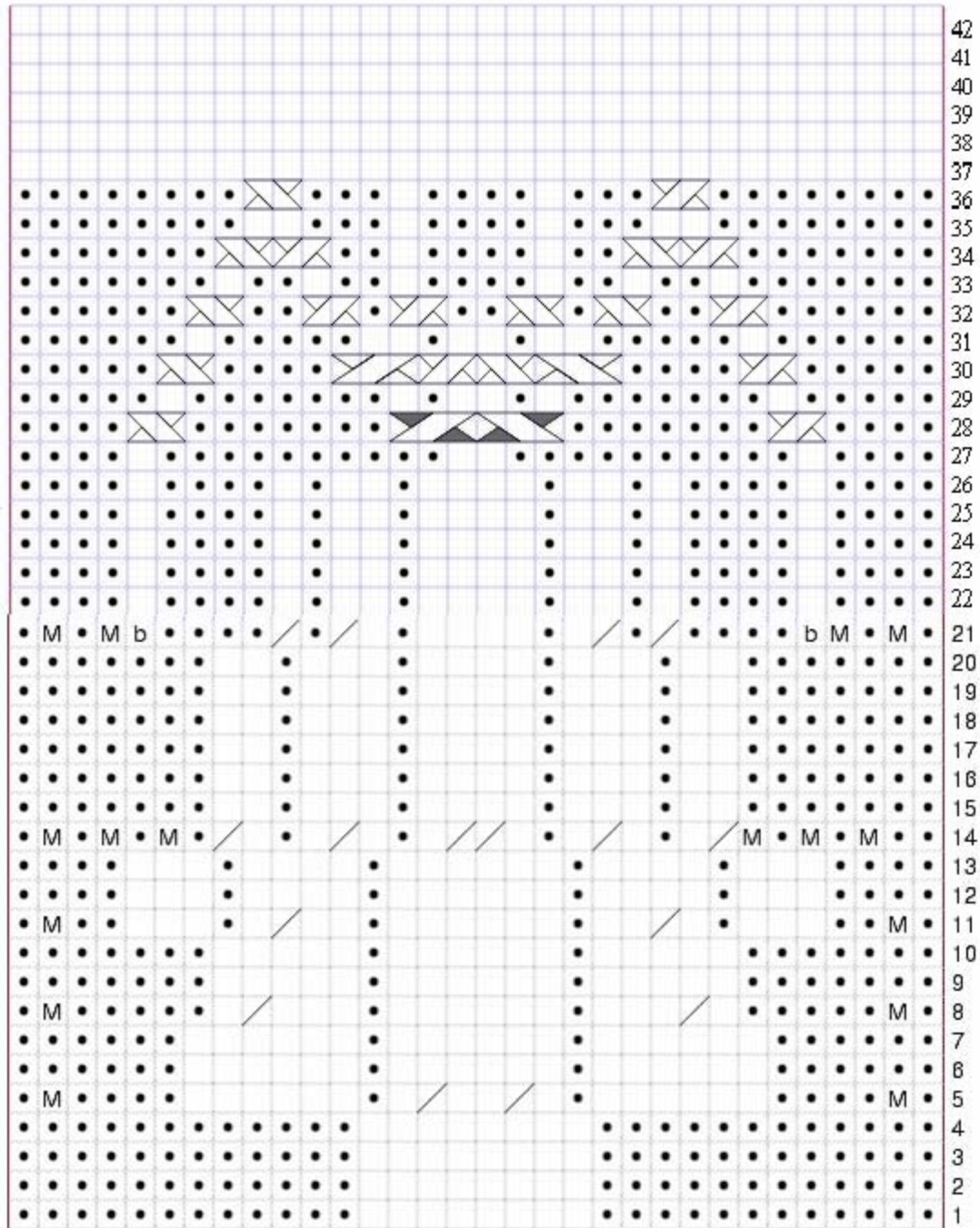
Buttons

Pick some juicy, chunky buttons and sew them onto the front of your bag.

[For guidance on lining your bag visit loumms.wordpress.com](http://loumms.wordpress.com)

loumms creations

Art Deco Chart

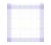


loumms creations

Abbreviations

/: k2 sts together

: purl

: knit

sl1: sl 1 st


p-wise: as if to purl

k-wise: as if to knit

M- make one stitch by picking up the stitch below the next stitch to be worked and purling into it

b- bobble: Make 4 stitches into one by knitting into the front, back, front, back and front of the same stitch, turn, p all 5 sts, turn, k2tog, k1, k2tog, turn, p3, turn, sl1-k2tog-pss0

 cable 1

 cable 2

 cable 3

 cable 4

 cable 5

 cable 6

Cable 1: sl1 st to cable needle hold front, p1, k1 from cable needle

Cable 2: sl1 st to cable needle hold back, k1, p1 from cable needle

Cable 3: sl 1 st to cable needle hold front, (k1, p1) k1 from cable needle

Cable 4: sl 2 sts to cable needle hold back, k1, (p1, k1) from cable needle

Cable 5: sl 1 st to cable needle hold front, p2, k1 from cable needle

Cable 6: sl 2 sts to cable needle hold back, k1, p2 from from cable needle

.loutheperson is louisa sisson who resides in south east london

This pattern is part of Loumms Creations and should only be distributed by permission of the designer.

Questions and comments should be directed to loummsmail@googlemail.com